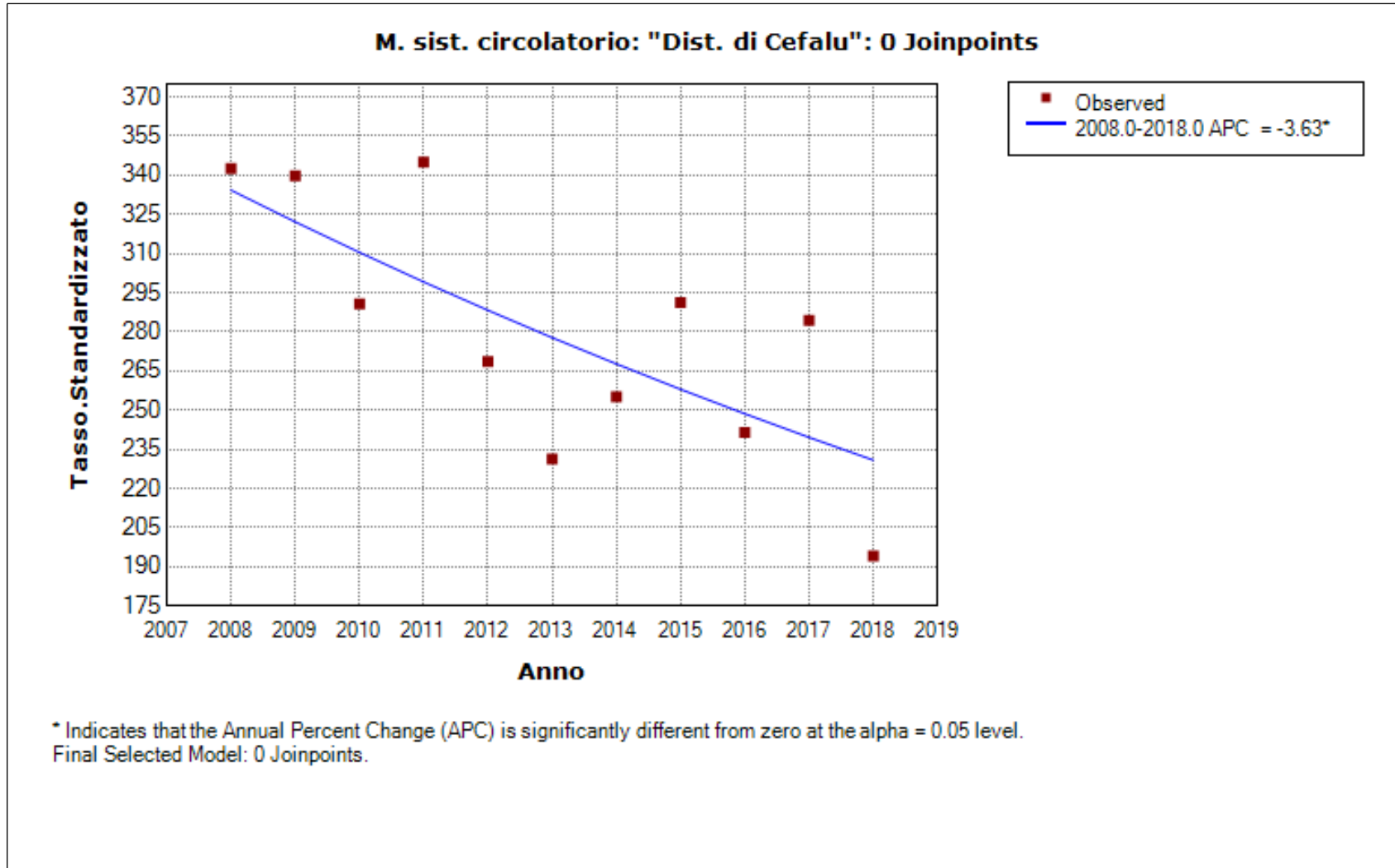


"Dist. di Cefalu"
 Number of Joinpoints: 0 (Final Selected Model)



"Dist. di Cefalu", Number of Joinpoints: 0 (Final Selected Model) continued...

Model Statistics							
Cohort	Number of Joinpoints	Number of Observations	Number of Parameters	Degrees of Freedom	Sum of Squared Errors	Mean Squared Error	Autocorrelation Parameter
"Dist. di Cefalu"	0	11	2	9	0.22212	0.02468	-0.63152

Estimated Regression Coefficients (Beta)					
Standard Parameterization					
Cohort	Parameter	Param Estimate	Standard Error	Test Statistic (t)	Prob > t
"Dist. di Cefalu"	Intercept 1	80.159692	15.995916	5.011260	0.000728
"Dist. di Cefalu"	Slope 1	-0.037026	0.007946	-4.659501	0.001186

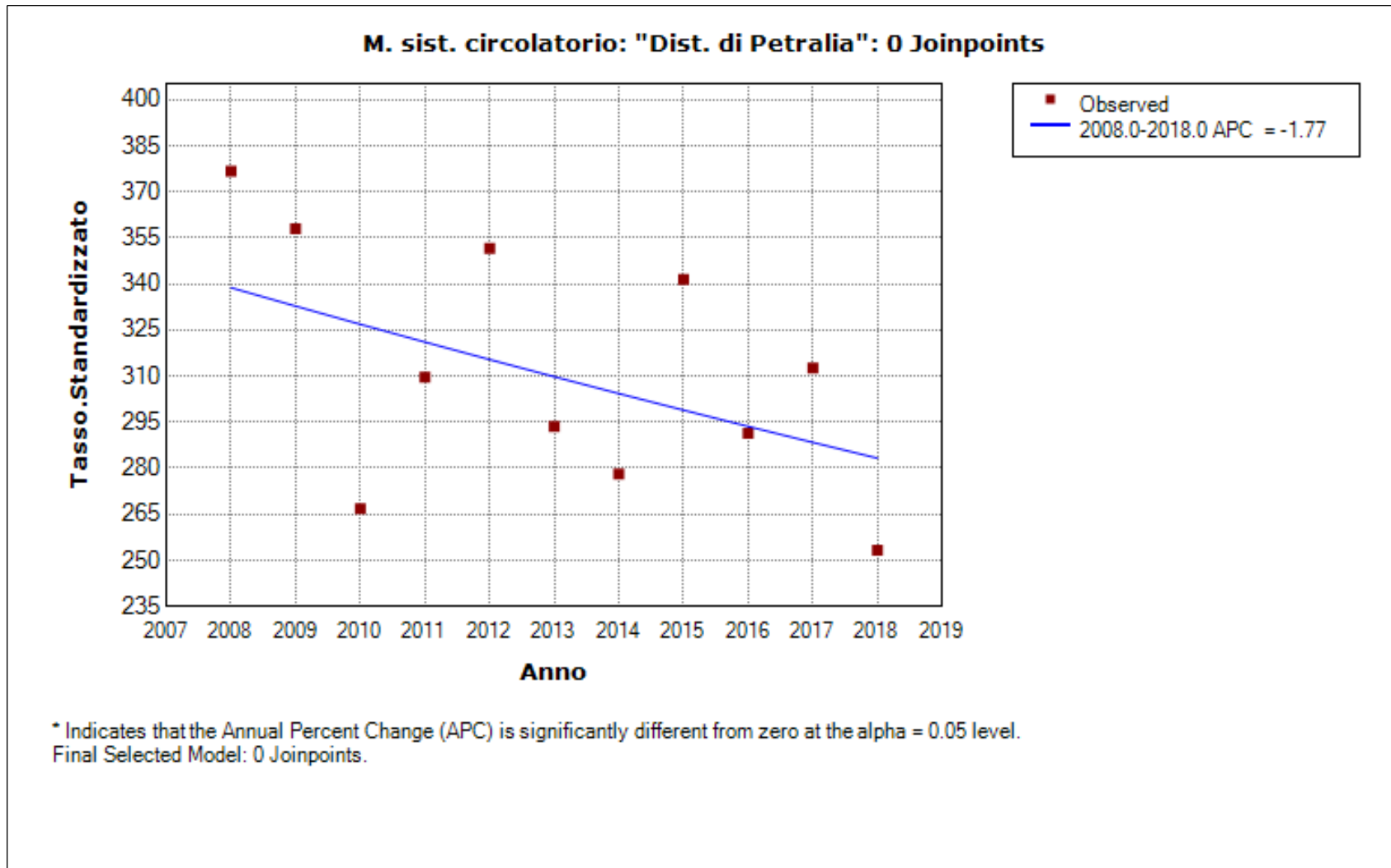
- The statistic could not be calculated.

General Parameterization					
Cohort	Parameter	Param Estimate	Standard Error	Test Statistic (t)	Prob > t
"Dist. di Cefalu"	Intercept 1	80.159692	15.995916	5.011260	0.000728
"Dist. di Cefalu"	Slope 1	-0.037026	0.007946	-4.659501	0.001186

- The statistic could not be calculated.

"Dist. di Petralia"
Number of Joinpoints: 0 (Final Selected Model)

"Dist. di Petralia", Number of Joinpoints: 0 (Final Selected Model) continued...



"Dist. di Petralia", Number of Joinpoints: 0 (Final Selected Model) continued...

Model Statistics							
Cohort	Number of Joinpoints	Number of Observations	Number of Parameters	Degrees of Freedom	Sum of Squared Errors	Mean Squared Error	Autocorrelation Parameter
"Dist. di Petralia"	0	11	2	9	0.12845	0.01427	-0.36488

Estimated Regression Coefficients (Beta)					
Standard Parameterization					
Cohort	Parameter	Param Estimate	Standard Error	Test Statistic (t)	Prob > t
"Dist. di Petralia"	Intercept 1	41.766480	16.859850	2.477275	0.035148
"Dist. di Petralia"	Slope 1	-0.017899	0.008375	-2.137071	0.061313

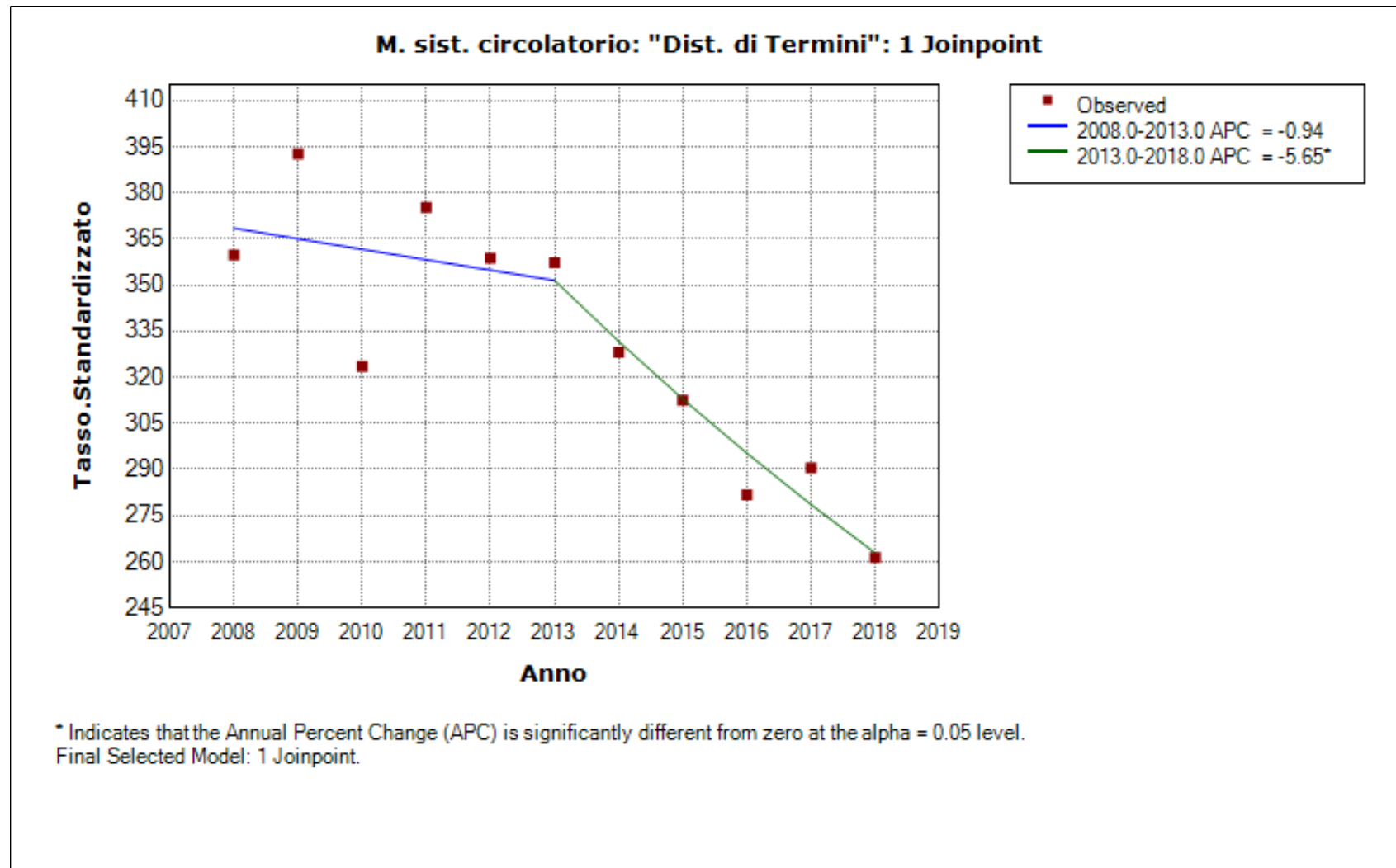
- The statistic could not be calculated.

General Parameterization					
Cohort	Parameter	Param Estimate	Standard Error	Test Statistic (t)	Prob > t
"Dist. di Petralia"	Intercept 1	41.766480	16.859850	2.477275	0.035148
"Dist. di Petralia"	Slope 1	-0.017899	0.008375	-2.137071	0.061313

- The statistic could not be calculated.

"Dist. di Termini"
Number of Joinpoints: 1 (Final Selected Model)

"Dist. di Termini", Number of Joinpoints: 1 (Final Selected Model) continued...



"Dist. di Termini", Number of Joinpoints: 1 (Final Selected Model) continued...

Model Statistics							
Cohort	Number of Joinpoints	Number of Observations	Number of Parameters	Degrees of Freedom	Sum of Squared Errors	Mean Squared Error	Autocorrelation Parameter
"Dist. di Termini"	1	11	4	7	0.02490	0.00356	-0.67535

Estimated Joinpoints				
Cohort	Joinpoint	Estimate	Lower CI	Upper CI
"Dist. di Termini"	1	2013	2011	2015

Estimated Regression Coefficients (Beta)					
Standard Parameterization					
Cohort	Parameter	Param Estimate	Standard Error	Test Statistic (t)	Prob > t
"Dist. di Termini"	Intercept 1	24.876072	20.964963	1.186555	0.280252
"Dist. di Termini"	Slope 1	-0.009446	0.010430	-0.905620	0.400041
"Dist. di Termini"	Slope 2 - Slope 1	-0.048682	0.014750	-3.300421	0.016399

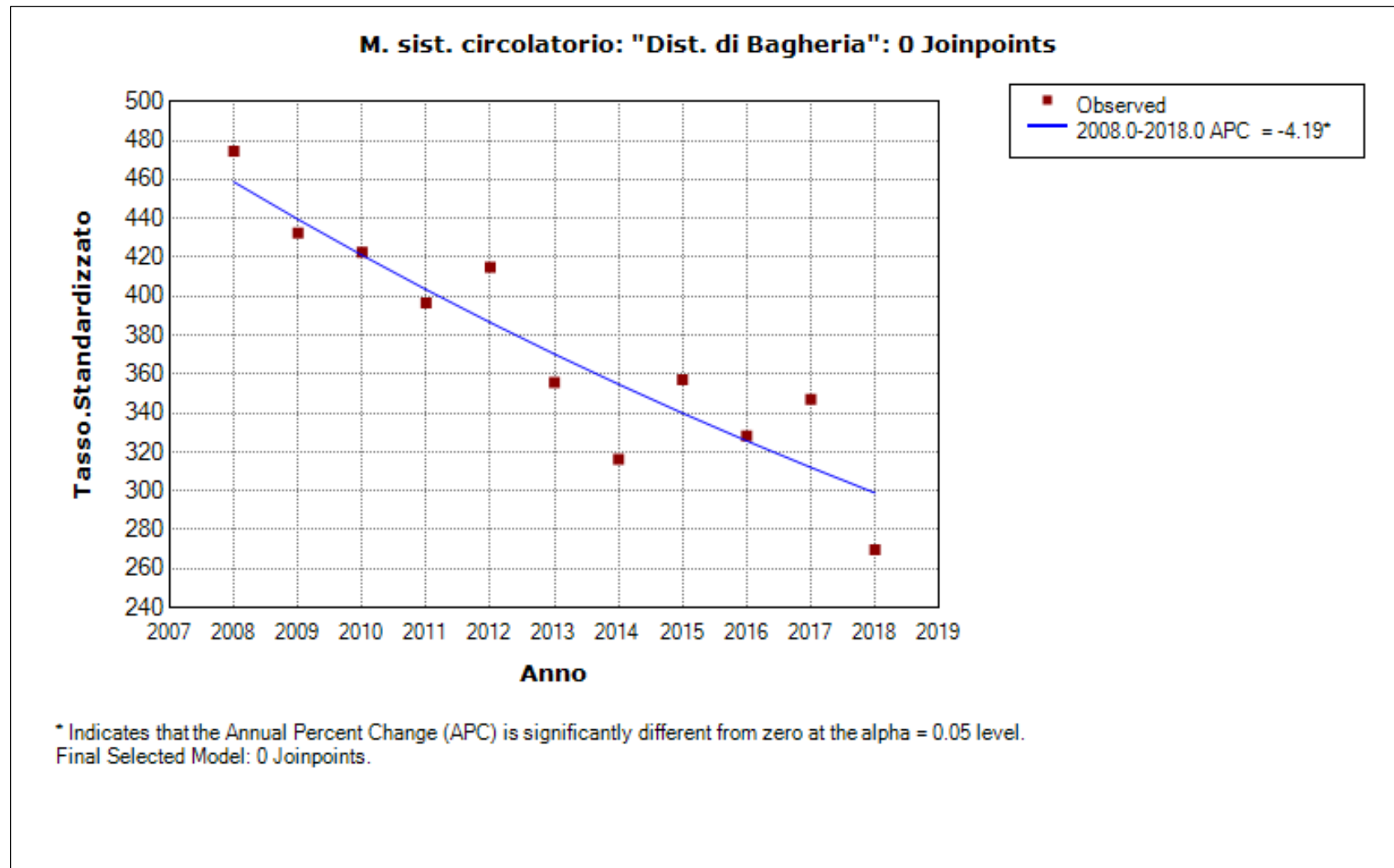
- The statistic could not be calculated.

General Parameterization					
Cohort	Parameter	Param Estimate	Standard Error	Test Statistic (t)	Prob > t
"Dist. di Termini"	Intercept 1	24.876072	20.964963	1.186555	0.280252
"Dist. di Termini"	Intercept 2	122.872437	21.025986	5.843837	0.001107
"Dist. di Termini"	Slope 1	-0.009446	0.010430	-0.905620	0.400041
"Dist. di Termini"	Slope 2	-0.058127	0.010430	-5.573120	0.001416

- The statistic could not be calculated.

"Dist. di Bagheria"
Number of Joinpoints: 0 (Final Selected Model)

"Dist. di Bagheria", Number of Joinpoints: 0 (Final Selected Model) continued...



"Dist. di Bagheria", Number of Joinpoints: 0 (Final Selected Model) continued...

Model Statistics							
Cohort	Number of Joinpoints	Number of Observations	Number of Parameters	Degrees of Freedom	Sum of Squared Errors	Mean Squared Error	Autocorrelation Parameter
"Dist. di Bagheria"	0	11	2	9	0.04791	0.00532	-0.42968

Estimated Regression Coefficients (Beta)					
Standard Parameterization					
Cohort	Parameter	Param Estimate	Standard Error	Test Statistic (t)	Prob > t
"Dist. di Bagheria"	Intercept 1	92.093649	9.625350	9.567823	0.000005
"Dist. di Bagheria"	Slope 1	-0.042811	0.004782	-8.953373	0.000009

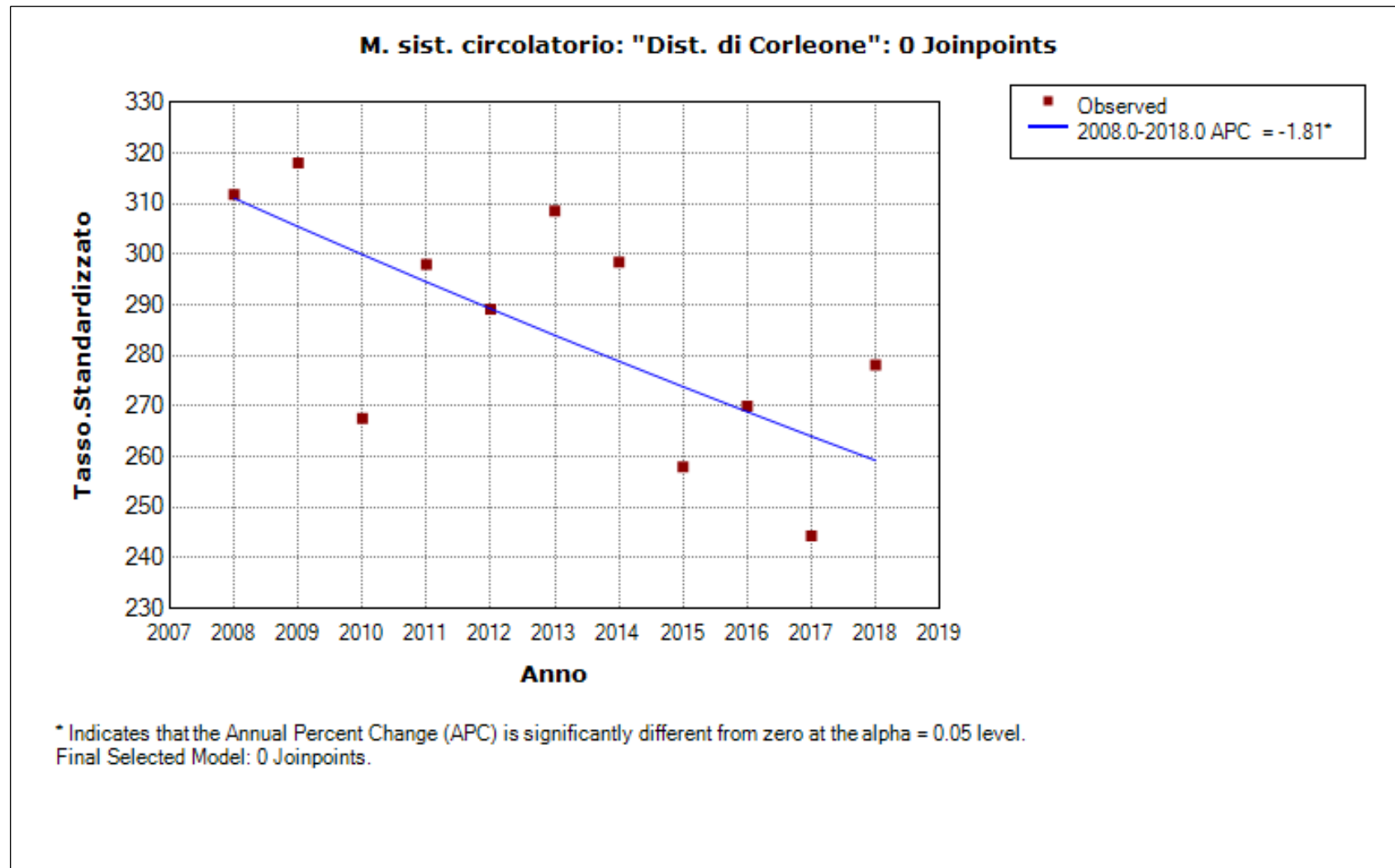
- The statistic could not be calculated.

General Parameterization					
Cohort	Parameter	Param Estimate	Standard Error	Test Statistic (t)	Prob > t
"Dist. di Bagheria"	Intercept 1	92.093649	9.625350	9.567823	0.000005
"Dist. di Bagheria"	Slope 1	-0.042811	0.004782	-8.953373	0.000009

- The statistic could not be calculated.

"Dist. di Corleone"
Number of Joinpoints: 0 (Final Selected Model)

"Dist. di Corleone", Number of Joinpoints: 0 (Final Selected Model) continued...



"Dist. di Corleone", Number of Joinpoints: 0 (Final Selected Model) continued...

Model Statistics							
Cohort	Number of Joinpoints	Number of Observations	Number of Parameters	Degrees of Freedom	Sum of Squared Errors	Mean Squared Error	Autocorrelation Parameter
"Dist. di Corleone"	0	11	2	9	0.07196	0.00800	-0.64116

Estimated Regression Coefficients (Beta)					
Standard Parameterization					
Cohort	Parameter	Param Estimate	Standard Error	Test Statistic (t)	Prob > t
"Dist. di Corleone"	Intercept 1	42.336766	8.967625	4.721068	0.001087
"Dist. di Corleone"	Slope 1	-0.018225	0.004455	-4.091149	0.002712

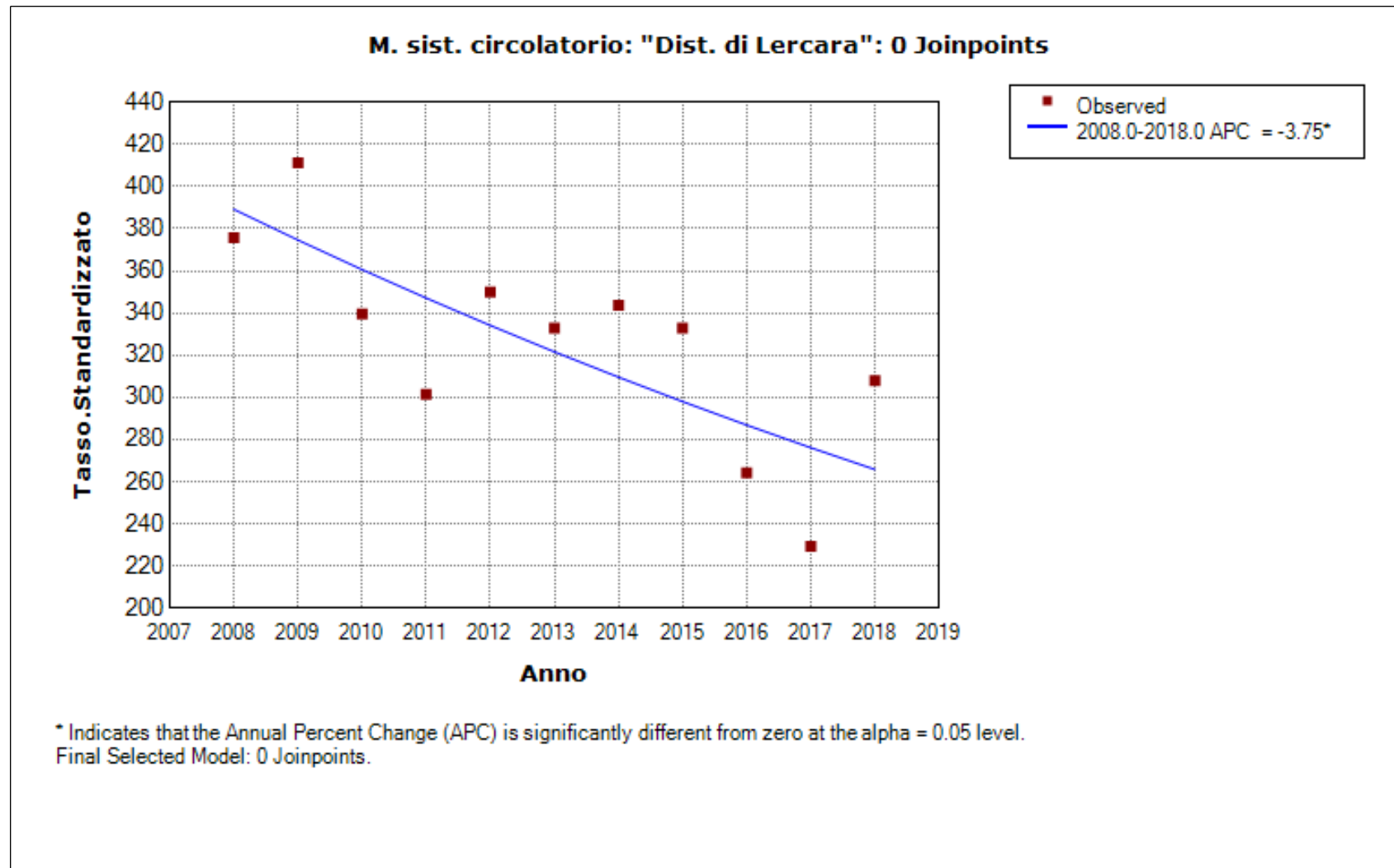
- The statistic could not be calculated.

General Parameterization					
Cohort	Parameter	Param Estimate	Standard Error	Test Statistic (t)	Prob > t
"Dist. di Corleone"	Intercept 1	42.336766	8.967625	4.721068	0.001087
"Dist. di Corleone"	Slope 1	-0.018225	0.004455	-4.091149	0.002712

- The statistic could not be calculated.

"Dist. di Lercara"
Number of Joinpoints: 0 (Final Selected Model)

"Dist. di Lercara", Number of Joinpoints: 0 (Final Selected Model) continued...



"Dist. di Lercara", Number of Joinpoints: 0 (Final Selected Model) continued...

Model Statistics							
Cohort	Number of Joinpoints	Number of Observations	Number of Parameters	Degrees of Freedom	Sum of Squared Errors	Mean Squared Error	Autocorrelation Parameter
"Dist. di Lercara"	0	11	2	9	0.15155	0.01684	-0.38654

Estimated Regression Coefficients (Beta)					
Standard Parameterization					
Cohort	Parameter	Param Estimate	Standard Error	Test Statistic (t)	Prob > t
"Dist. di Lercara"	Intercept 1	82.625100	17.915931	4.611823	0.001269
"Dist. di Lercara"	Slope 1	-0.038178	0.008900	-4.289586	0.002021

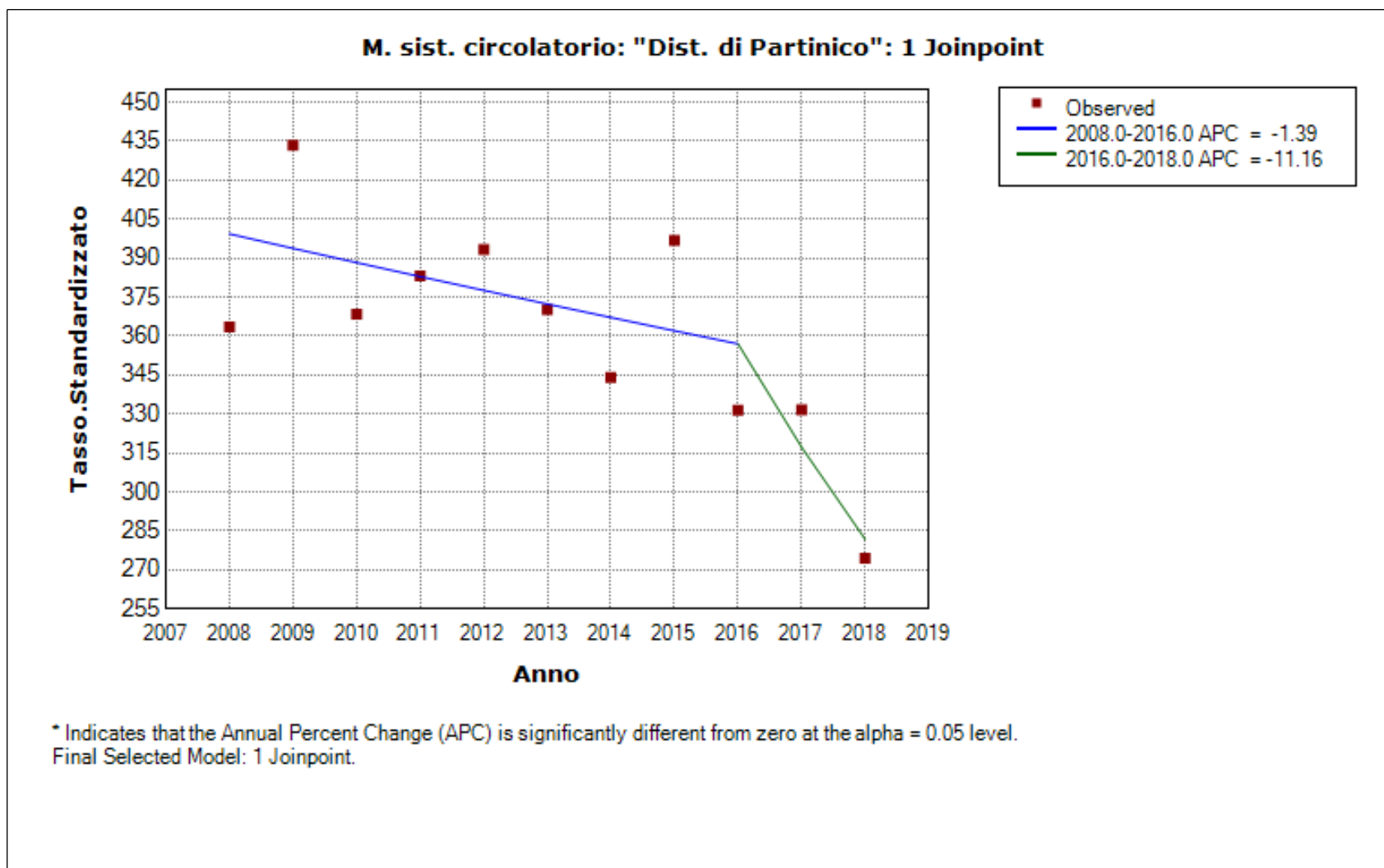
- The statistic could not be calculated.

General Parameterization					
Cohort	Parameter	Param Estimate	Standard Error	Test Statistic (t)	Prob > t
"Dist. di Lercara"	Intercept 1	82.625100	17.915931	4.611823	0.001269
"Dist. di Lercara"	Slope 1	-0.038178	0.008900	-4.289586	0.002021

- The statistic could not be calculated.

"Dist. di Partinico"
Number of Joinpoints: 1 (Final Selected Model)

"Dist. di Partinico", Number of Joinpoints: 1 (Final Selected Model) continued...



"Dist. di Partinico", Number of Joinpoints: 1 (Final Selected Model) continued...

Model Statistics							
Cohort	Number of Joinpoints	Number of Observations	Number of Parameters	Degrees of Freedom	Sum of Squared Errors	Mean Squared Error	Autocorrelation Parameter
"Dist. di Partinico"	1	11	4	7	0.02833	0.00405	-0.60364

Estimated Joinpoints				
Cohort	Joinpoint	Estimate	Lower CI	Upper CI
"Dist. di Partinico"	1	2016	2013	2016

Estimated Regression Coefficients (Beta)					
Standard Parameterization					
Cohort	Parameter	Param Estimate	Standard Error	Test Statistic (t)	Prob > t
"Dist. di Partinico"	Intercept 1	34.114519	12.574165	2.713064	0.034963
"Dist. di Partinico"	Slope 1	-0.014006	0.006251	-2.240684	0.066285
"Dist. di Partinico"	Slope 2 - Slope 1	-0.104272	0.108740	-0.958915	0.374631

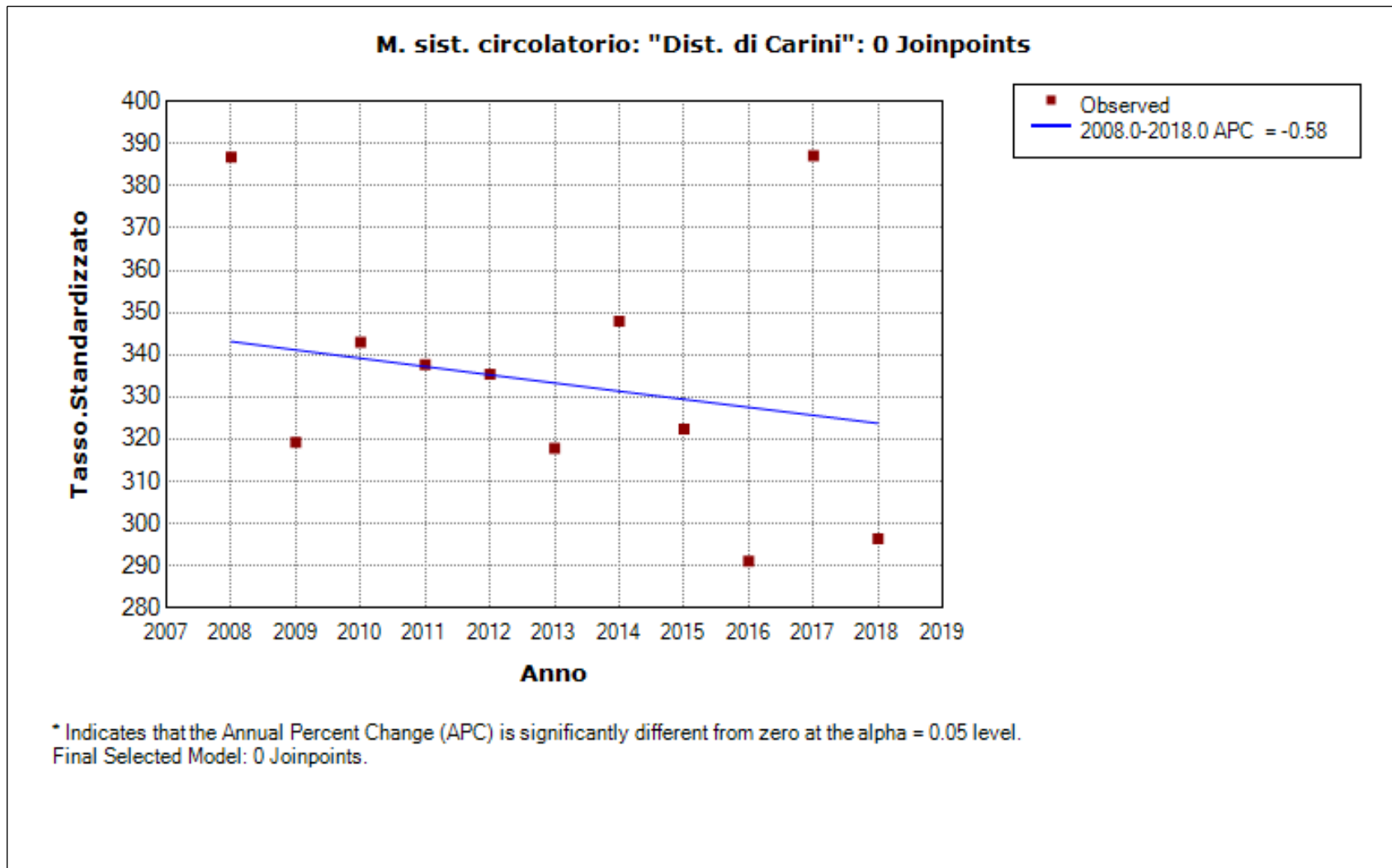
- The statistic could not be calculated.

General Parameterization					
Cohort	Parameter	Param Estimate	Standard Error	Test Statistic (t)	Prob > t
"Dist. di Partinico"	Intercept 1	34.114519	12.574165	2.713064	0.034963
"Dist. di Partinico"	Intercept 2	244.326993	219.013856	1.115578	0.307279
"Dist. di Partinico"	Slope 1	-0.014006	0.006251	-2.240684	0.066285
"Dist. di Partinico"	Slope 2	-0.118278	0.108560	-1.089523	0.317736

- The statistic could not be calculated.

"Dist. di Carini"
Number of Joinpoints: 0 (Final Selected Model)

"Dist. di Carini", Number of Joinpoints: 0 (Final Selected Model) continued...



"Dist. di Carini", Number of Joinpoints: 0 (Final Selected Model) continued...

Model Statistics							
Cohort	Number of Joinpoints	Number of Observations	Number of Parameters	Degrees of Freedom	Sum of Squared Errors	Mean Squared Error	Autocorrelation Parameter
"Dist. di Carini"	0	11	2	9	0.07126	0.00792	-0.67153

Estimated Regression Coefficients (Beta)					
Standard Parameterization					
Cohort	Parameter	Param Estimate	Standard Error	Test Statistic (t)	Prob > t
"Dist. di Carini"	Intercept 1	17.523513	8.488075	2.064486	0.068977
"Dist. di Carini"	Slope 1	-0.005819	0.004217	-1.380120	0.200863

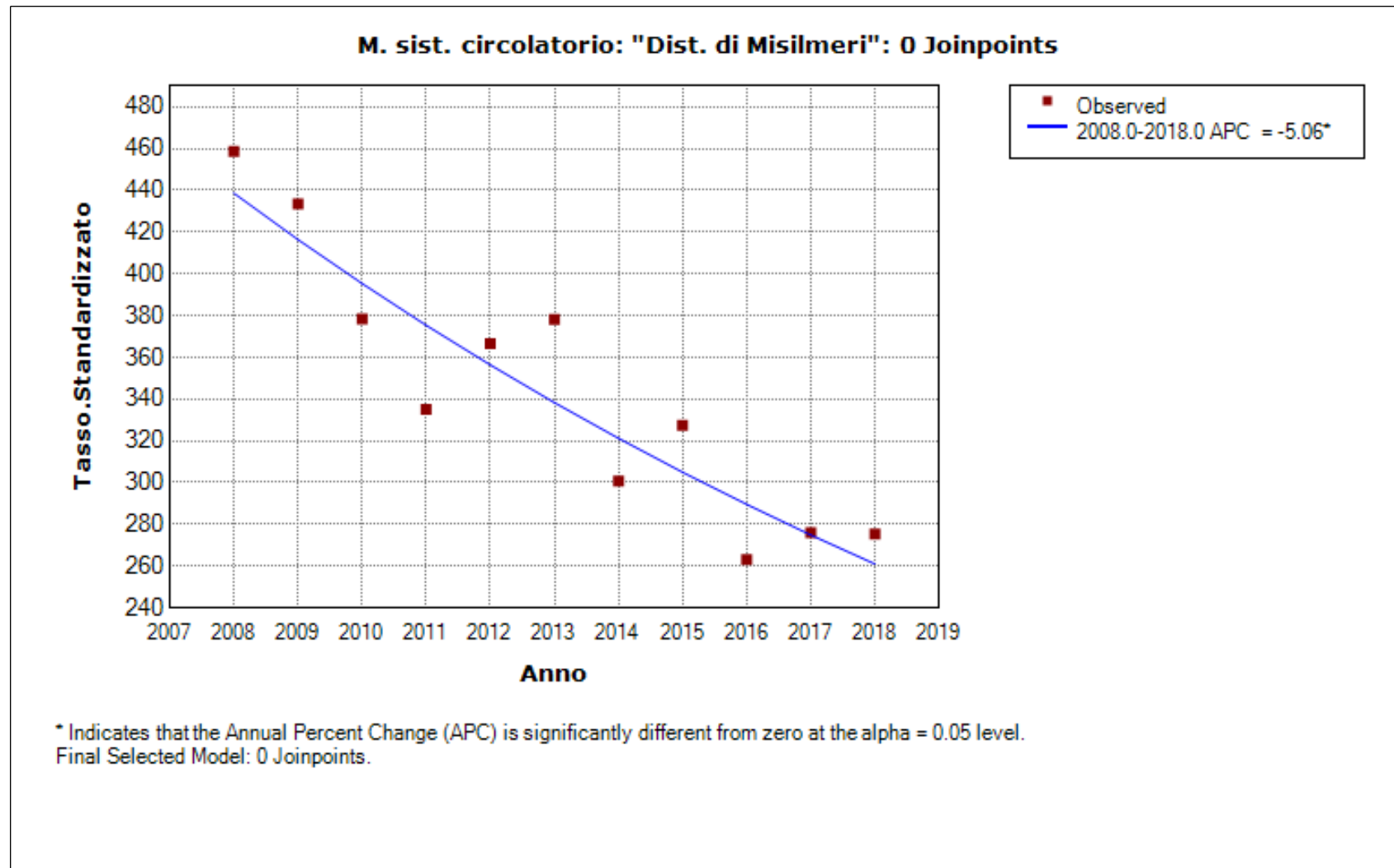
- The statistic could not be calculated.

General Parameterization					
Cohort	Parameter	Param Estimate	Standard Error	Test Statistic (t)	Prob > t
"Dist. di Carini"	Intercept 1	17.523513	8.488075	2.064486	0.068977
"Dist. di Carini"	Slope 1	-0.005819	0.004217	-1.380120	0.200863

- The statistic could not be calculated.

"Dist. di Misilmeri"
Number of Joinpoints: 0 (Final Selected Model)

"Dist. di Misilmeri", Number of Joinpoints: 0 (Final Selected Model) continued...



"Dist. di Misilmeri", Number of Joinpoints: 0 (Final Selected Model) continued...

Model Statistics							
Cohort	Number of Joinpoints	Number of Observations	Number of Parameters	Degrees of Freedom	Sum of Squared Errors	Mean Squared Error	Autocorrelation Parameter
"Dist. di Misilmeri"	0	11	2	9	0.06922	0.00769	-0.50875

Estimated Regression Coefficients (Beta)					
Standard Parameterization					
Cohort	Parameter	Param Estimate	Standard Error	Test Statistic (t)	Prob > t
"Dist. di Misilmeri"	Intercept 1	110.294889	10.565367	10.439286	0.000002
"Dist. di Misilmeri"	Slope 1	-0.051898	0.005249	-9.888057	0.000004

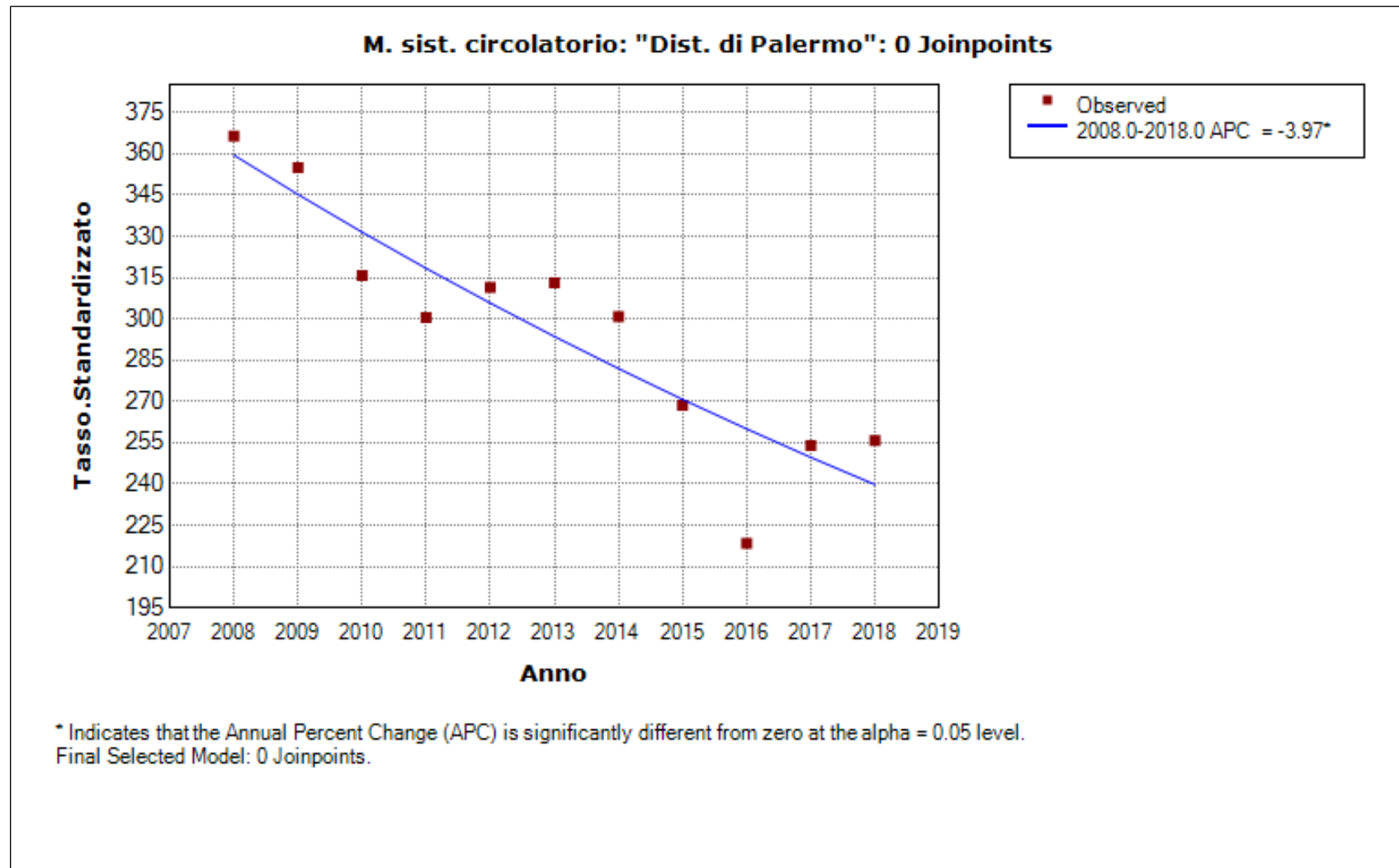
- The statistic could not be calculated.

General Parameterization					
Cohort	Parameter	Param Estimate	Standard Error	Test Statistic (t)	Prob > t
"Dist. di Misilmeri"	Intercept 1	110.294889	10.565367	10.439286	0.000002
"Dist. di Misilmeri"	Slope 1	-0.051898	0.005249	-9.888057	0.000004

- The statistic could not be calculated.

"Dist. di Palermo"
Number of Joinpoints: 0 (Final Selected Model)

"Dist. di Palermo", Number of Joinpoints: 0 (Final Selected Model) continued...



"Dist. di Palermo", Number of Joinpoints: 0 (Final Selected Model) continued...

Model Statistics							
Cohort	Number of Joinpoints	Number of Observations	Number of Parameters	Degrees of Freedom	Sum of Squared Errors	Mean Squared Error	Autocorrelation Parameter
"Dist. di Palermo"	0	11	2	9	0.05086	0.00565	0.13402

Estimated Regression Coefficients (Beta)					
Standard Parameterization					
Cohort	Parameter	Param Estimate	Standard Error	Test Statistic (t)	Prob > t
"Dist. di Palermo"	Intercept 1	87.240109	15.839516	5.507751	0.000376
"Dist. di Palermo"	Slope 1	-0.040516	0.007869	-5.149022	0.000604

- The statistic could not be calculated.

General Parameterization					
Cohort	Parameter	Param Estimate	Standard Error	Test Statistic (t)	Prob > t
"Dist. di Palermo"	Intercept 1	87.240109	15.839516	5.507751	0.000376
"Dist. di Palermo"	Slope 1	-0.040516	0.007869	-5.149022	0.000604

- The statistic could not be calculated.

"Dist. di Palermo", Number of Joinpoints: 0 (Final Selected Model) continued...