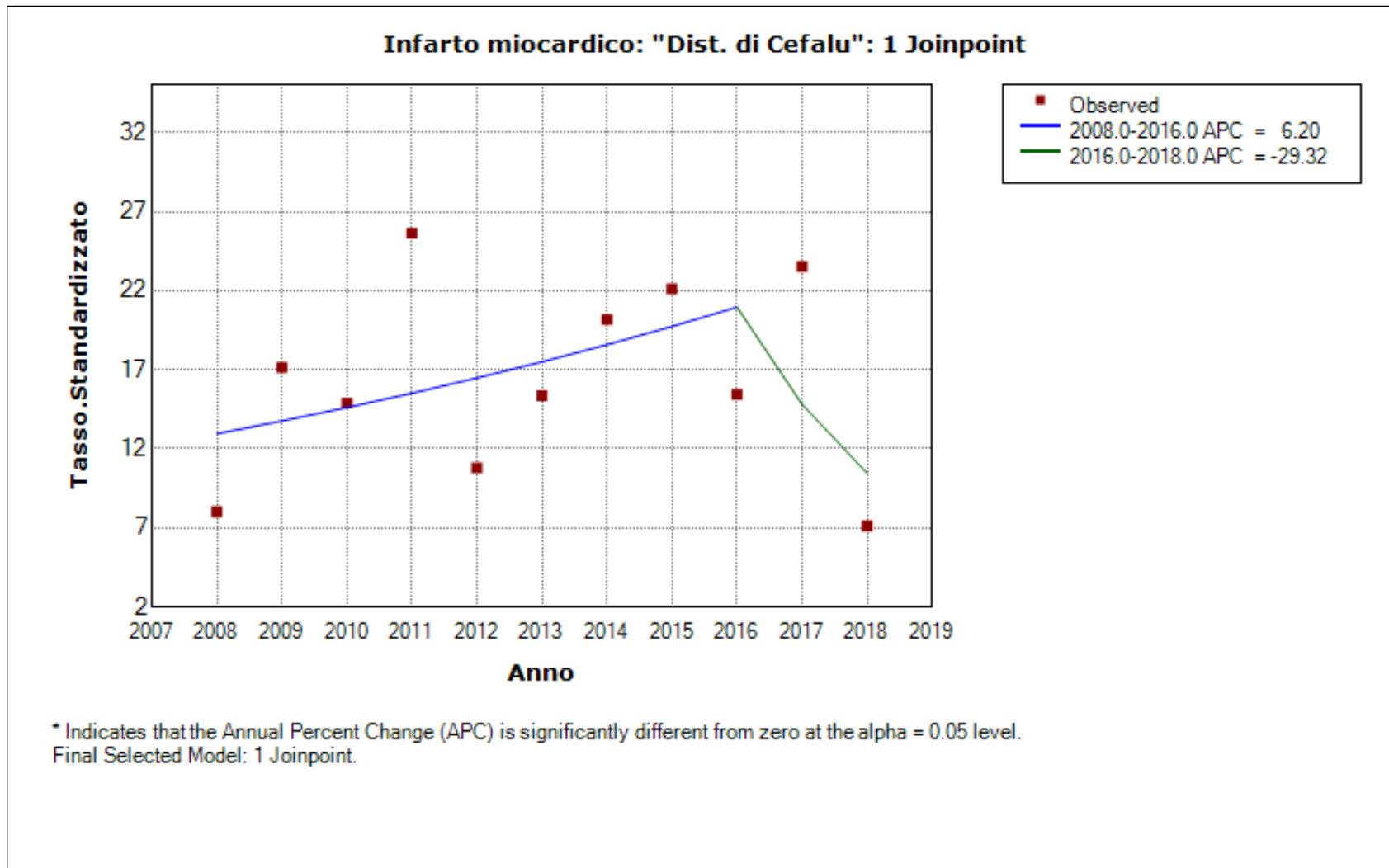


"Dist. di Cefalu"  
 Number of Joinpoints: 1 (Final Selected Model)



"Dist. di Cefalu", Number of Joinpoints: 1 (Final Selected Model) continued...

Model Statistics							
Cohort	Number of Joinpoints	Number of Observations	Number of Parameters	Degrees of Freedom	Sum of Squared Errors	Mean Squared Error	Autocorrelation Parameter
"Dist. di Cefalu"	1	11	4	7	1.19353	0.17050	-0.59371

Estimated Joinpoints				
Cohort	Joinpoint	Estimate	Lower CI	Upper CI
"Dist. di Cefalu"	1	2016	2010	2016

Estimated Regression Coefficients (Beta)					
Standard Parameterization					
Cohort	Parameter	Param Estimate	Standard Error	Test Statistic (t)	Prob >  t
"Dist. di Cefalu"	Intercept 1	-118.146118	71.079600	-1.662166	0.147542
"Dist. di Cefalu"	Slope 1	0.060114	0.035335	1.701225	0.139803
"Dist. di Cefalu"	Slope 2 - Slope 1	-0.407121	0.608803	-0.668723	0.528547

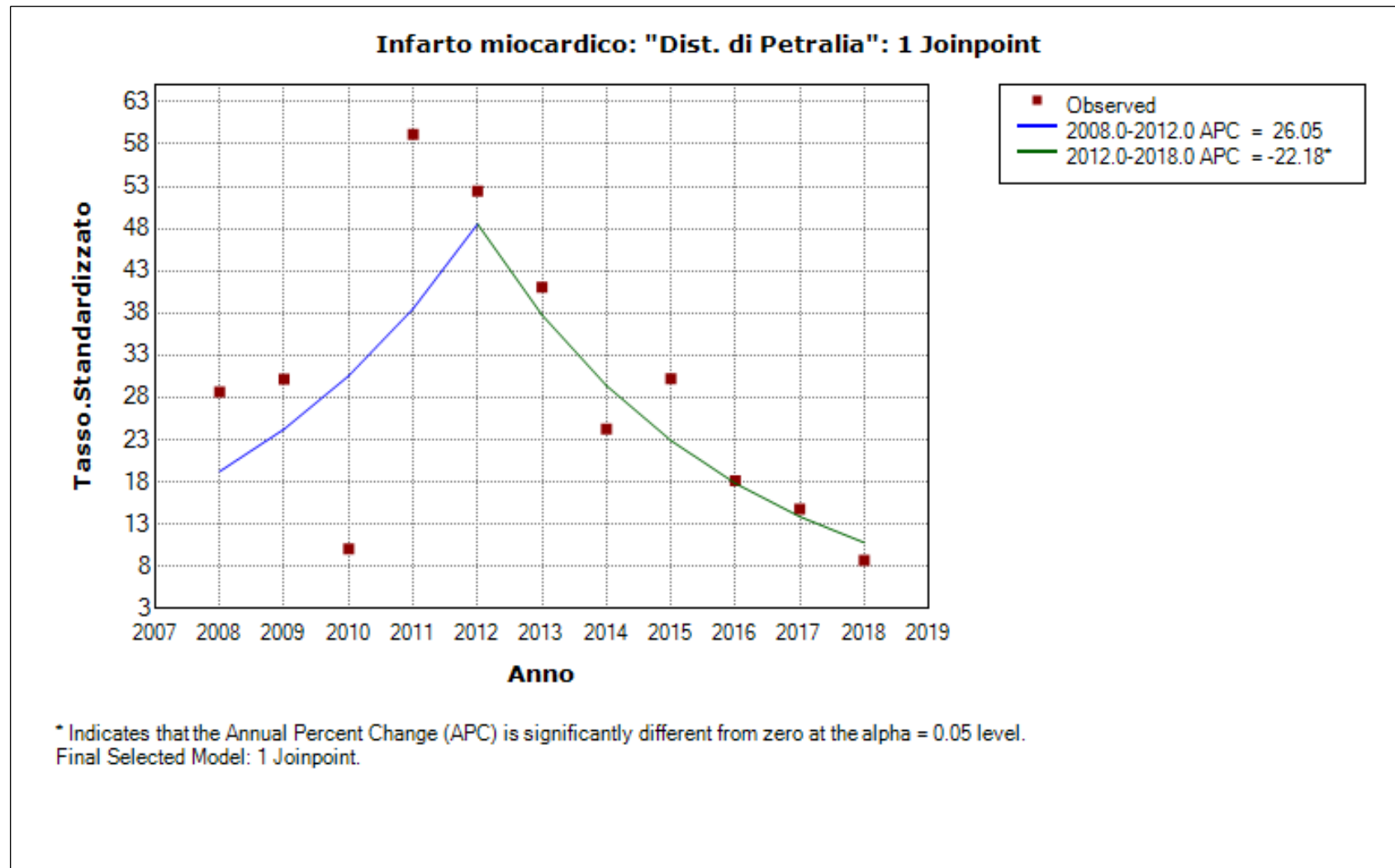
- The statistic could not be calculated.

General Parameterization					
Cohort	Parameter	Param Estimate	Standard Error	Test Statistic (t)	Prob >  t
"Dist. di Cefalu"	Intercept 1	-118.146118	71.079600	-1.662166	0.147542
"Dist. di Cefalu"	Intercept 2	702.608981	1226.159686	0.573016	0.587450
"Dist. di Cefalu"	Slope 1	0.060114	0.035335	1.701225	0.139803
"Dist. di Cefalu"	Slope 2	-0.347007	0.607777	-0.570945	0.588766

- The statistic could not be calculated.

"Dist. di Petralia"  
Number of Joinpoints: 1 (Final Selected Model)

"Dist. di Petralia", Number of Joinpoints: 1 (Final Selected Model) continued...



"Dist. di Petralia", Number of Joinpoints: 1 (Final Selected Model) continued...

Model Statistics							
Cohort	Number of Joinpoints	Number of Observations	Number of Parameters	Degrees of Freedom	Sum of Squared Errors	Mean Squared Error	Autocorrelation Parameter
"Dist. di Petralia"	1	11	4	7	1.72425	0.24632	-0.32610

Estimated Joinpoints				
Cohort	Joinpoint	Estimate	Lower CI	Upper CI
"Dist. di Petralia"	1	2012	2010	2016

Estimated Regression Coefficients (Beta)					
Standard Parameterization					
Cohort	Parameter	Param Estimate	Standard Error	Test Statistic (t)	Prob >  t
"Dist. di Petralia"	Intercept 1	-461.868406	377.318323	-1.224082	0.266802
"Dist. di Petralia"	Slope 1	0.231486	0.187765	1.232853	0.263741
"Dist. di Petralia"	Slope 2 - Slope 1	-0.482221	0.209944	-2.296910	0.061360

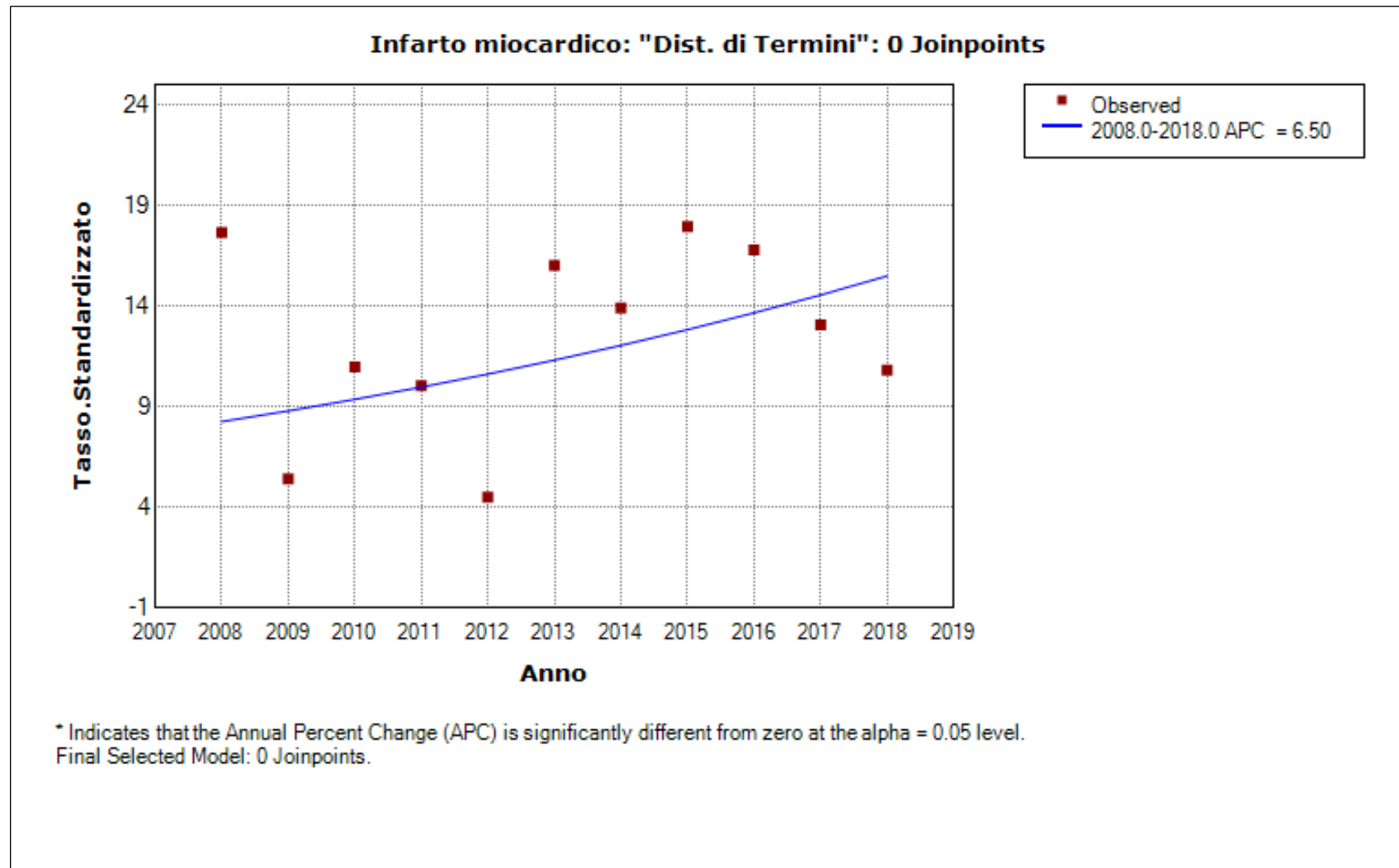
- The statistic could not be calculated.

General Parameterization					
Cohort	Parameter	Param Estimate	Standard Error	Test Statistic (t)	Prob >  t
"Dist. di Petralia"	Intercept 1	-461.868406	377.318323	-1.224082	0.266802
"Dist. di Petralia"	Intercept 2	508.360852	189.289769	2.685622	0.036263
"Dist. di Petralia"	Slope 1	0.231486	0.187765	1.232853	0.263741
"Dist. di Petralia"	Slope 2	-0.250735	0.093918	-2.669713	0.037041

- The statistic could not be calculated.

"Dist. di Termini"  
Number of Joinpoints: 0 (Final Selected Model)

"Dist. di Termini", Number of Joinpoints: 0 (Final Selected Model) continued...



"Dist. di Termini", Number of Joinpoints: 0 (Final Selected Model) continued...

Model Statistics							
Cohort	Number of Joinpoints	Number of Observations	Number of Parameters	Degrees of Freedom	Sum of Squared Errors	Mean Squared Error	Autocorrelation Parameter
"Dist. di Termini"	0	11	2	9	2.67163	0.29685	-0.57263

Estimated Regression Coefficients (Beta)					
Standard Parameterization					
Cohort	Parameter	Param Estimate	Standard Error	Test Statistic (t)	Prob >  t
"Dist. di Termini"	Intercept 1	-124.380659	60.442579	-2.057832	0.069724
"Dist. di Termini"	Slope 1	0.062994	0.030026	2.097974	0.065333

- The statistic could not be calculated.

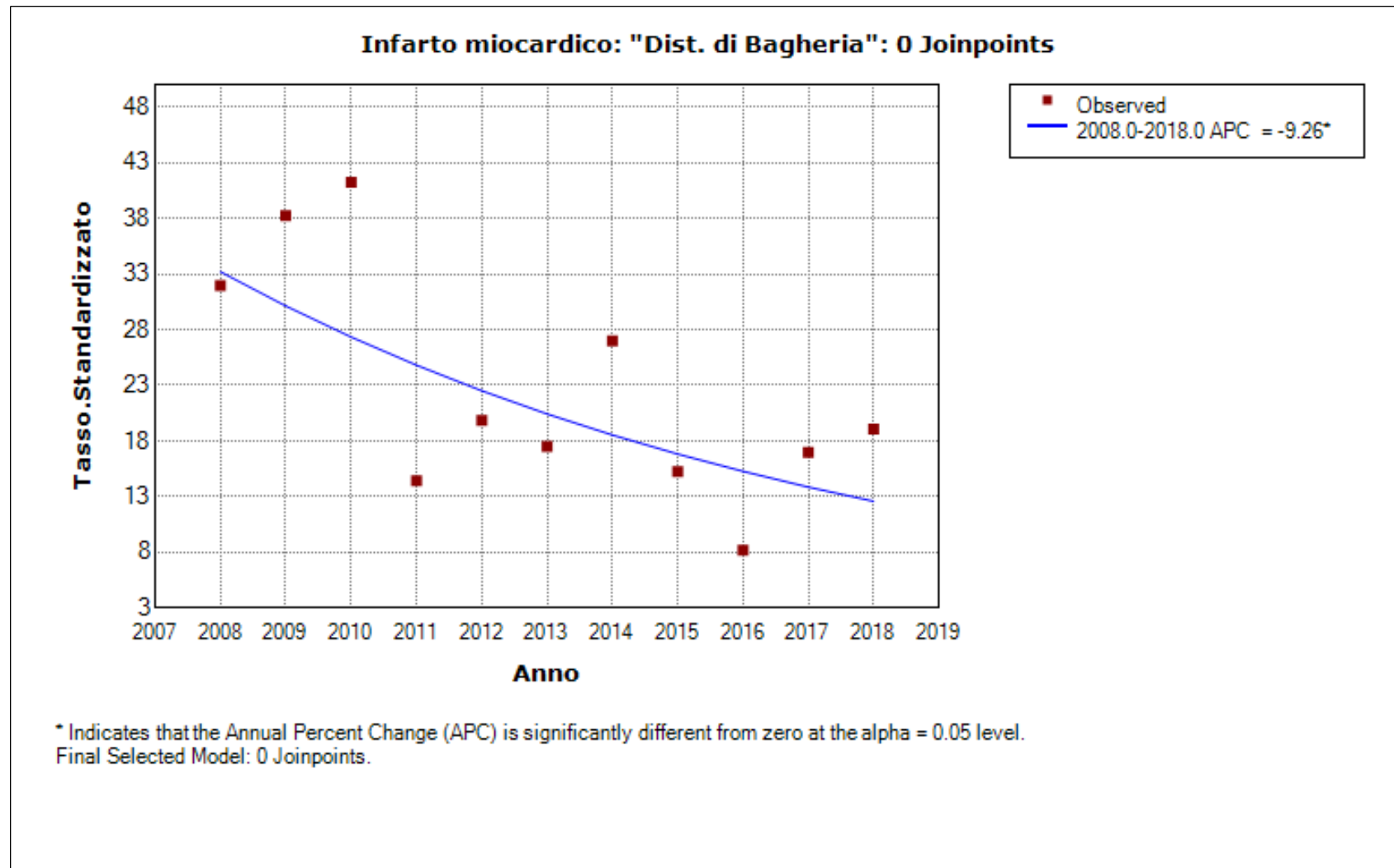
General Parameterization					
Cohort	Parameter	Param Estimate	Standard Error	Test Statistic (t)	Prob >  t
"Dist. di Termini"	Intercept 1	-124.380659	60.442579	-2.057832	0.069724
"Dist. di Termini"	Slope 1	0.062994	0.030026	2.097974	0.065333

- The statistic could not be calculated.



"Dist. di Bagheria"  
Number of Joinpoints: 0 (Final Selected Model)

"Dist. di Bagheria", Number of Joinpoints: 0 (Final Selected Model) continued...



"Dist. di Bagheria", Number of Joinpoints: 0 (Final Selected Model) continued...

Model Statistics							
Cohort	Number of Joinpoints	Number of Observations	Number of Parameters	Degrees of Freedom	Sum of Squared Errors	Mean Squared Error	Autocorrelation Parameter
"Dist. di Bagheria"	0	11	2	9	1.35860	0.15096	-0.18367

Estimated Regression Coefficients (Beta)					
Standard Parameterization					
Cohort	Parameter	Param Estimate	Standard Error	Test Statistic (t)	Prob >  t
"Dist. di Bagheria"	Intercept 1	198.546626	64.650957	3.071055	0.013331
"Dist. di Bagheria"	Slope 1	-0.097133	0.032117	-3.024391	0.014377

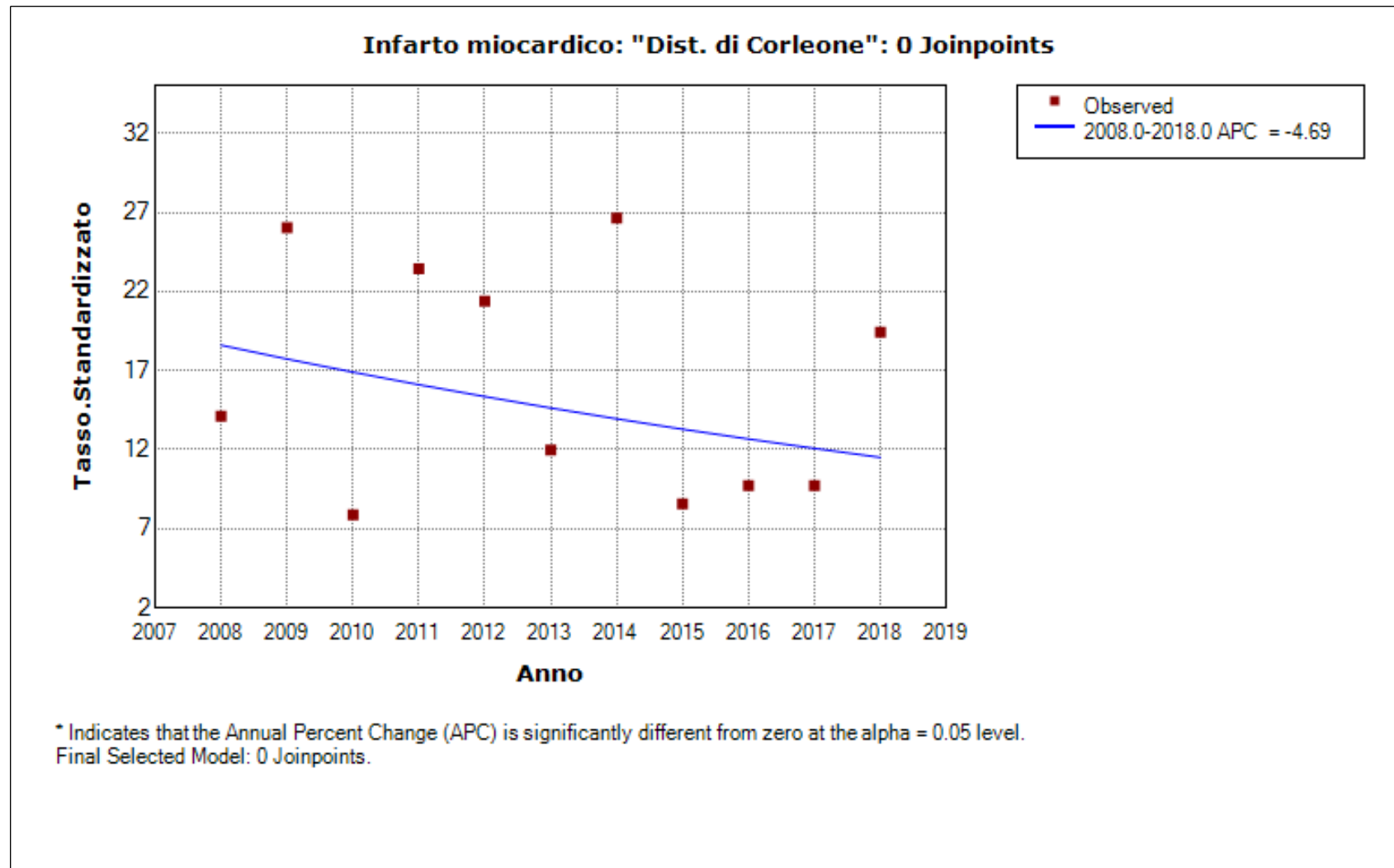
- The statistic could not be calculated.

General Parameterization					
Cohort	Parameter	Param Estimate	Standard Error	Test Statistic (t)	Prob >  t
"Dist. di Bagheria"	Intercept 1	198.546626	64.650957	3.071055	0.013331
"Dist. di Bagheria"	Slope 1	-0.097133	0.032117	-3.024391	0.014377

- The statistic could not be calculated.

"Dist. di Corleone"  
Number of Joinpoints: 0 (Final Selected Model)

"Dist. di Corleone", Number of Joinpoints: 0 (Final Selected Model) continued...



"Dist. di Corleone", Number of Joinpoints: 0 (Final Selected Model) continued...

Model Statistics							
Cohort	Number of Joinpoints	Number of Observations	Number of Parameters	Degrees of Freedom	Sum of Squared Errors	Mean Squared Error	Autocorrelation Parameter
"Dist. di Corleone"	0	11	2	9	2.72232	0.30248	-0.65257

Estimated Regression Coefficients (Beta)					
Standard Parameterization					
Cohort	Parameter	Param Estimate	Standard Error	Test Statistic (t)	Prob >  t
"Dist. di Corleone"	Intercept 1	99.300074	54.154453	1.833646	0.099915
"Dist. di Corleone"	Slope 1	-0.047996	0.026902	-1.784091	0.108076

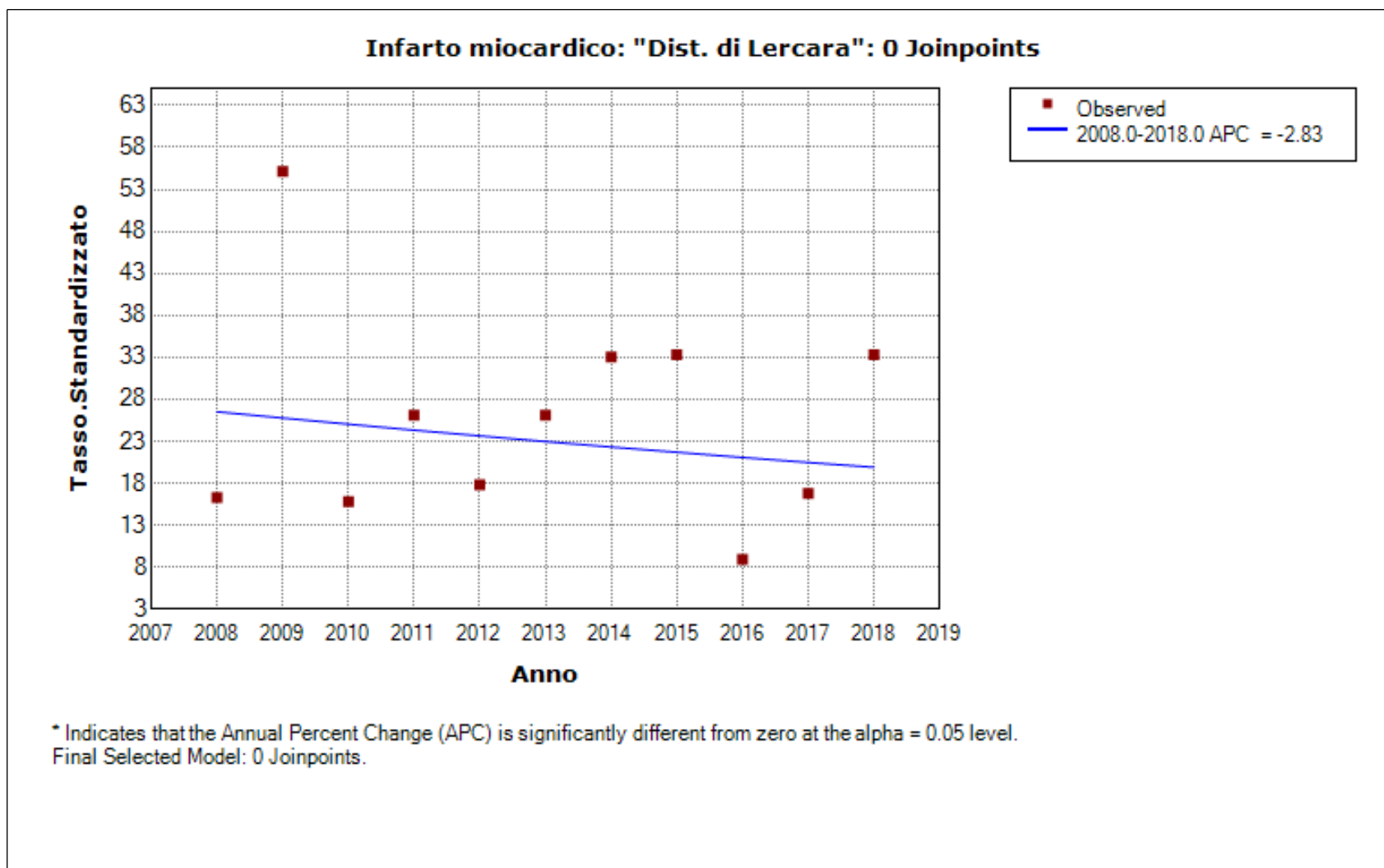
- The statistic could not be calculated.

General Parameterization					
Cohort	Parameter	Param Estimate	Standard Error	Test Statistic (t)	Prob >  t
"Dist. di Corleone"	Intercept 1	99.300074	54.154453	1.833646	0.099915
"Dist. di Corleone"	Slope 1	-0.047996	0.026902	-1.784091	0.108076

- The statistic could not be calculated.

"Dist. di Lercara"  
Number of Joinpoints: 0 (Final Selected Model)

"Dist. di Lercara", Number of Joinpoints: 0 (Final Selected Model) continued...





"Dist. di Lercara", Number of Joinpoints: 0 (Final Selected Model) continued...

Model Statistics							
Cohort	Number of Joinpoints	Number of Observations	Number of Parameters	Degrees of Freedom	Sum of Squared Errors	Mean Squared Error	Autocorrelation Parameter
"Dist. di Lercara"	0	11	2	9	2.38203	0.26467	-0.31094

Estimated Regression Coefficients (Beta)					
Standard Parameterization					
Cohort	Parameter	Param Estimate	Standard Error	Test Statistic (t)	Prob >  t
"Dist. di Lercara"	Intercept 1	60.991973	76.497779	0.797304	0.445799
"Dist. di Lercara"	Slope 1	-0.028742	0.038002	-0.756342	0.468779

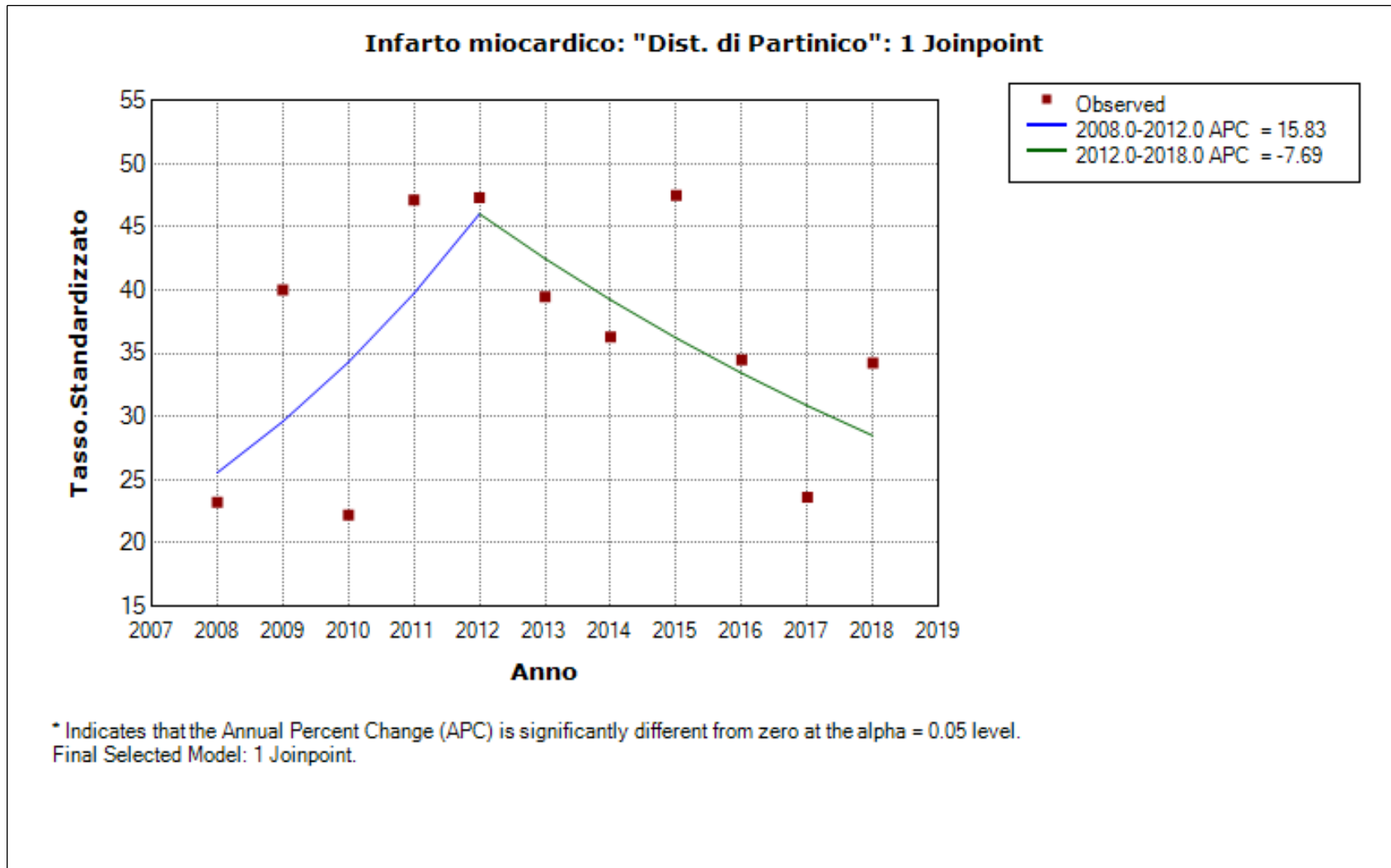
- The statistic could not be calculated.

General Parameterization					
Cohort	Parameter	Param Estimate	Standard Error	Test Statistic (t)	Prob >  t
"Dist. di Lercara"	Intercept 1	60.991973	76.497779	0.797304	0.445799
"Dist. di Lercara"	Slope 1	-0.028742	0.038002	-0.756342	0.468779

- The statistic could not be calculated.

"Dist. di Partinico"  
Number of Joinpoints: 1 (Final Selected Model)

"Dist. di Partinico", Number of Joinpoints: 1 (Final Selected Model) continued...



"Dist. di Partinico", Number of Joinpoints: 1 (Final Selected Model) continued...

Model Statistics							
Cohort	Number of Joinpoints	Number of Observations	Number of Parameters	Degrees of Freedom	Sum of Squared Errors	Mean Squared Error	Autocorrelation Parameter
"Dist. di Partinico"	1	11	4	7	0.56010	0.08001	-0.65146

Estimated Joinpoints				
Cohort	Joinpoint	Estimate	Lower CI	Upper CI
"Dist. di Partinico"	1	2012	2010	2016

Estimated Regression Coefficients (Beta)					
Standard Parameterization					
Cohort	Parameter	Param Estimate	Standard Error	Test Statistic (t)	Prob >  t
"Dist. di Partinico"	Intercept 1	-291.918652	159.793114	-1.826854	0.117499
"Dist. di Partinico"	Slope 1	0.146992	0.079516	1.848584	0.114014
"Dist. di Partinico"	Slope 2 - Slope 1	-0.226956	0.088213	-2.572813	0.042175

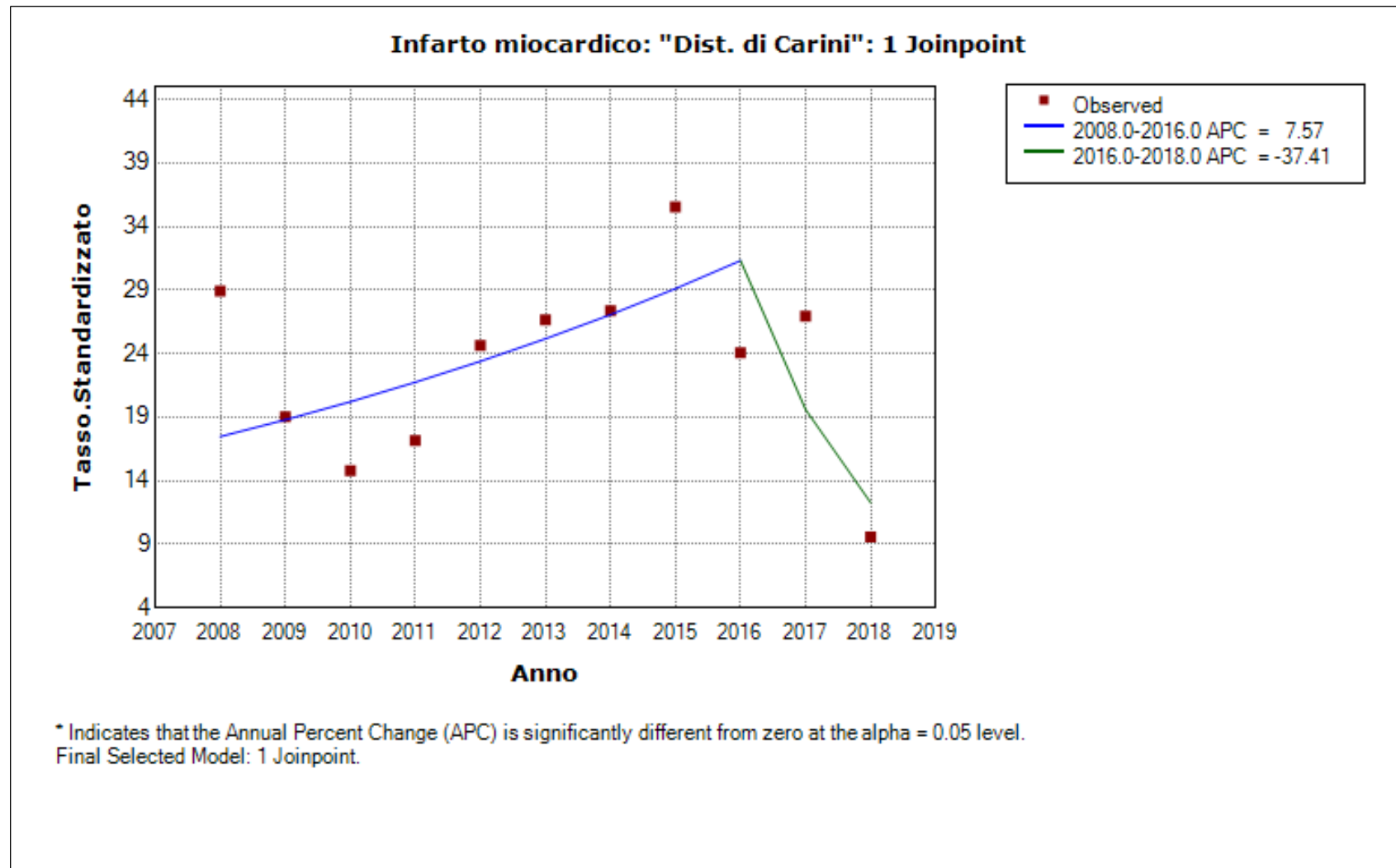
- The statistic could not be calculated.

General Parameterization					
Cohort	Parameter	Param Estimate	Standard Error	Test Statistic (t)	Prob >  t
"Dist. di Partinico"	Intercept 1	-291.918652	159.793114	-1.826854	0.117499
"Dist. di Partinico"	Intercept 2	164.717378	76.976997	2.139826	0.076169
"Dist. di Partinico"	Slope 1	0.146992	0.079516	1.848584	0.114014
"Dist. di Partinico"	Slope 2	-0.079964	0.038194	-2.093637	0.081189

- The statistic could not be calculated.

"Dist. di Carini"  
Number of Joinpoints: 1 (Final Selected Model)

"Dist. di Carini", Number of Joinpoints: 1 (Final Selected Model) continued...



"Dist. di Carini", Number of Joinpoints: 1 (Final Selected Model) continued...

Model Statistics							
Cohort	Number of Joinpoints	Number of Observations	Number of Parameters	Degrees of Freedom	Sum of Squared Errors	Mean Squared Error	Autocorrelation Parameter
"Dist. di Carini"	1	11	4	7	0.97601	0.13943	-0.58555

Estimated Joinpoints				
Cohort	Joinpoint	Estimate	Lower CI	Upper CI
"Dist. di Carini"	1	2016	2013	2016

Estimated Regression Coefficients (Beta)					
Standard Parameterization					
Cohort	Parameter	Param Estimate	Standard Error	Test Statistic (t)	Prob >  t
"Dist. di Carini"	Intercept 1	-143.668523	69.825282	-2.057543	0.085346
"Dist. di Carini"	Slope 1	0.072973	0.034712	2.102234	0.080230
"Dist. di Carini"	Slope 2 - Slope 1	-0.541462	0.593342	-0.912563	0.396658

- The statistic could not be calculated.

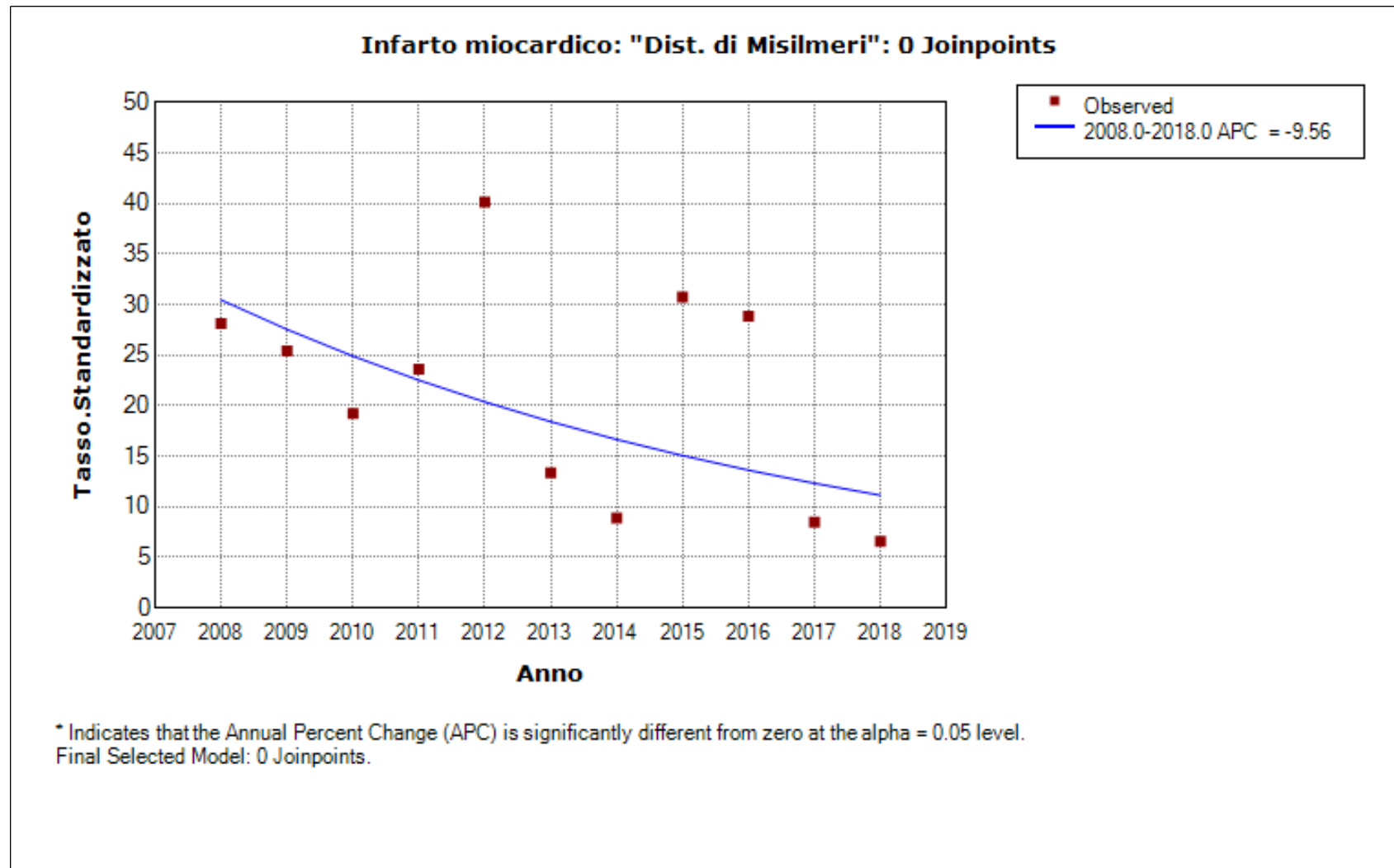
General Parameterization					
Cohort	Parameter	Param Estimate	Standard Error	Test Statistic (t)	Prob >  t
"Dist. di Carini"	Intercept 1	-143.668523	69.825282	-2.057543	0.085346
"Dist. di Carini"	Intercept 2	947.919125	1194.989162	0.793245	0.457847
"Dist. di Carini"	Slope 1	0.072973	0.034712	2.102234	0.080230
"Dist. di Carini"	Slope 2	-0.468490	0.592326	-0.790932	0.459097

- The statistic could not be calculated.

"Dist. di Misilmeri"  
Number of Joinpoints: 0 (Final Selected Model)



"Dist. di Misilmeri", Number of Joinpoints: 0 (Final Selected Model) continued...



"Dist. di Misilmeri", Number of Joinpoints: 0 (Final Selected Model) continued...

Model Statistics							
Cohort	Number of Joinpoints	Number of Observations	Number of Parameters	Degrees of Freedom	Sum of Squared Errors	Mean Squared Error	Autocorrelation Parameter
"Dist. di Misilmeri"	0	11	2	9	2.66563	0.29618	-0.15789

Estimated Regression Coefficients (Beta)					
Standard Parameterization					
Cohort	Parameter	Param Estimate	Standard Error	Test Statistic (t)	Prob >  t
"Dist. di Misilmeri"	Intercept 1	205.266729	92.505162	2.218976	0.053654
"Dist. di Misilmeri"	Slope 1	-0.100523	0.045954	-2.187483	0.056481

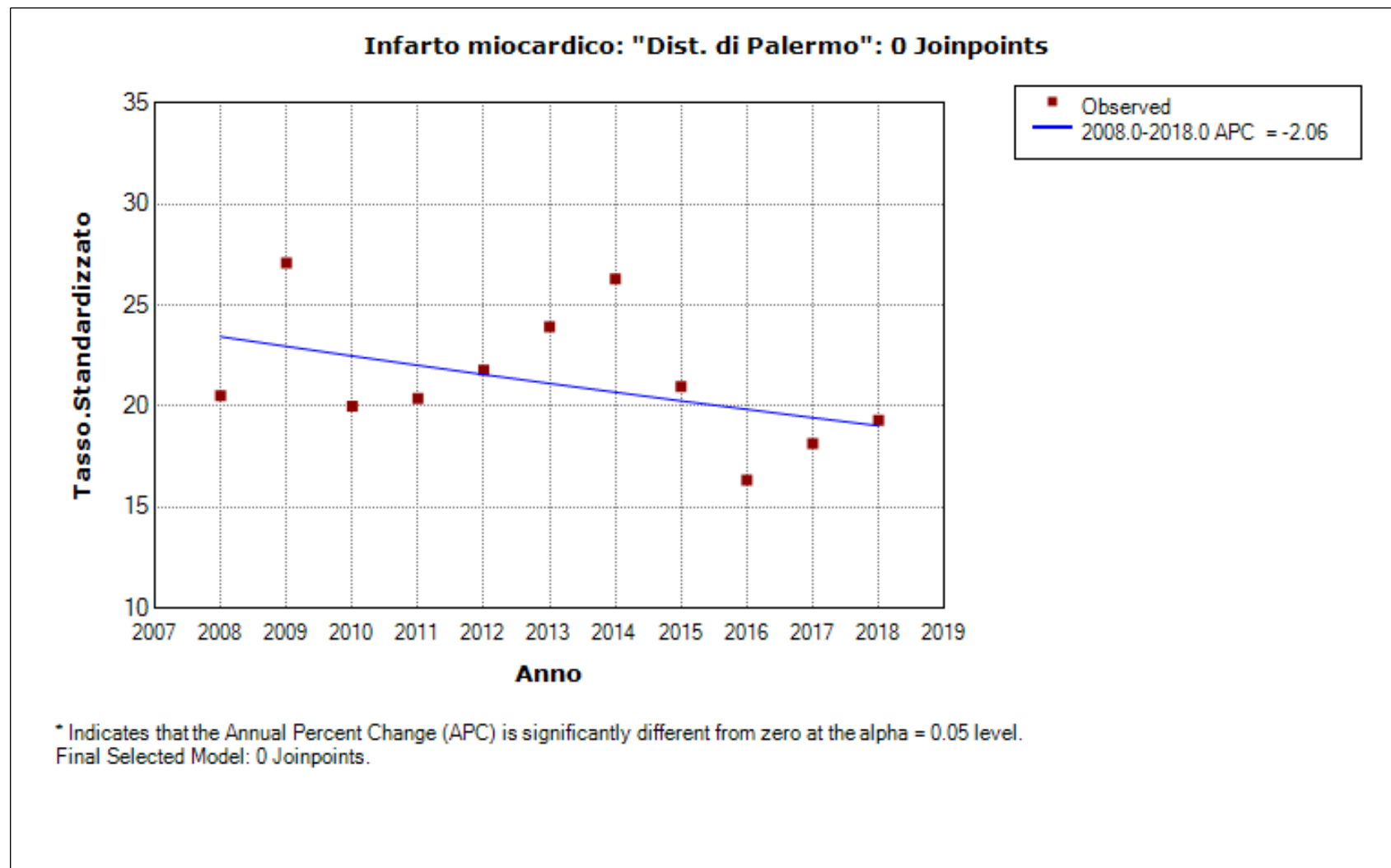
- The statistic could not be calculated.

General Parameterization					
Cohort	Parameter	Param Estimate	Standard Error	Test Statistic (t)	Prob >  t
"Dist. di Misilmeri"	Intercept 1	205.266729	92.505162	2.218976	0.053654
"Dist. di Misilmeri"	Slope 1	-0.100523	0.045954	-2.187483	0.056481

- The statistic could not be calculated.

"Dist. di Palermo"  
Number of Joinpoints: 0 (Final Selected Model)

"Dist. di Palermo", Number of Joinpoints: 0 (Final Selected Model) continued...



"Dist. di Palermo", Number of Joinpoints: 0 (Final Selected Model) continued...

Model Statistics							
Cohort	Number of Joinpoints	Number of Observations	Number of Parameters	Degrees of Freedom	Sum of Squared Errors	Mean Squared Error	Autocorrelation Parameter
"Dist. di Palermo"	0	11	2	9	0.18258	0.02029	-0.03019

Estimated Regression Coefficients (Beta)					
Standard Parameterization					
Cohort	Parameter	Param Estimate	Standard Error	Test Statistic (t)	Prob >  t
"Dist. di Palermo"	Intercept 1	44.985576	26.737431	1.682494	0.126766
"Dist. di Palermo"	Slope 1	-0.020832	0.013282	-1.568412	0.151230

- The statistic could not be calculated.

General Parameterization					
Cohort	Parameter	Param Estimate	Standard Error	Test Statistic (t)	Prob >  t
"Dist. di Palermo"	Intercept 1	44.985576	26.737431	1.682494	0.126766
"Dist. di Palermo"	Slope 1	-0.020832	0.013282	-1.568412	0.151230

- The statistic could not be calculated.

*"Dist. di Palermo", Number of Joinpoints: 0 (Final Selected Model) continued...*